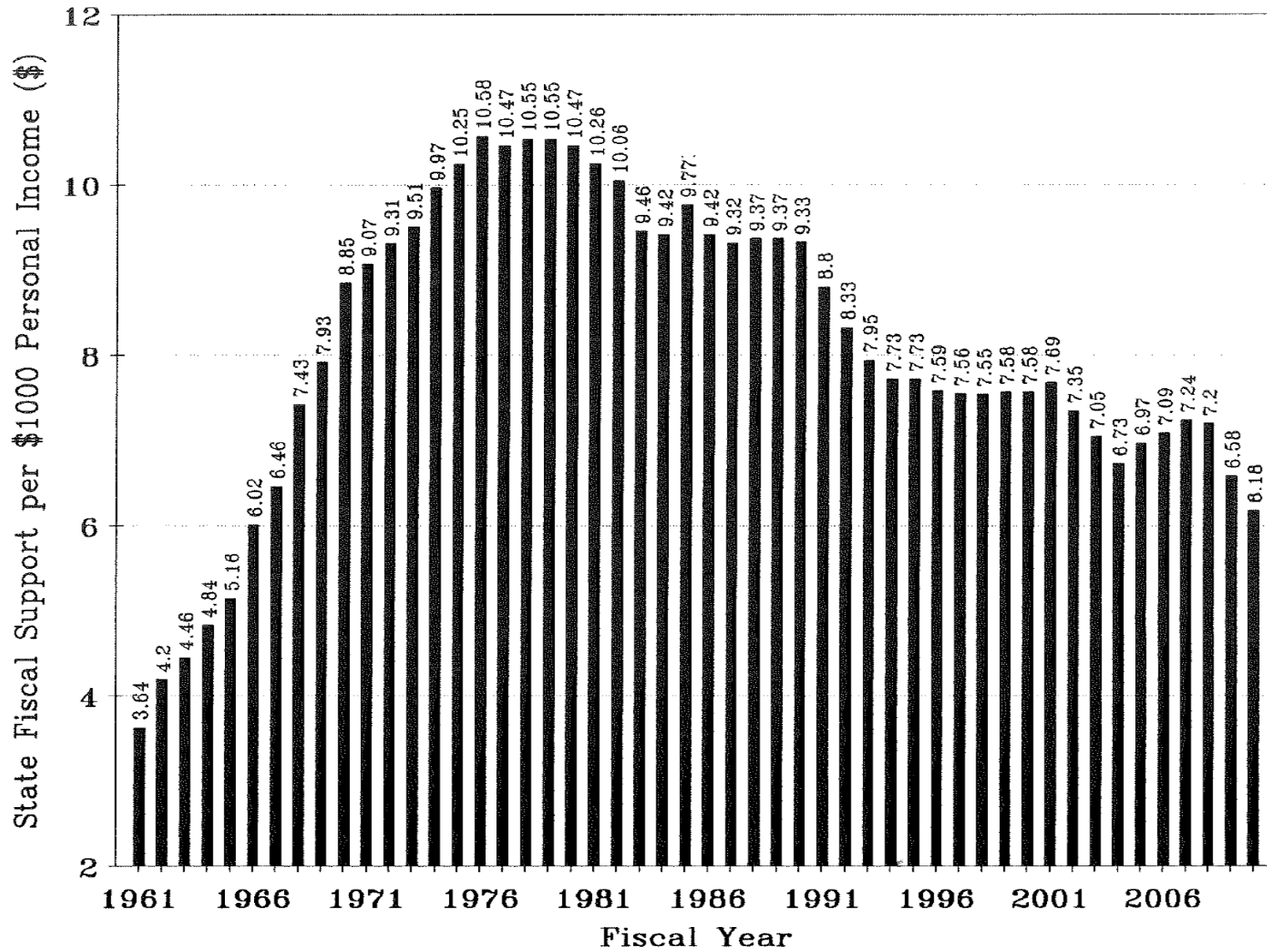


NALEO National Summit on the State of Latino Education

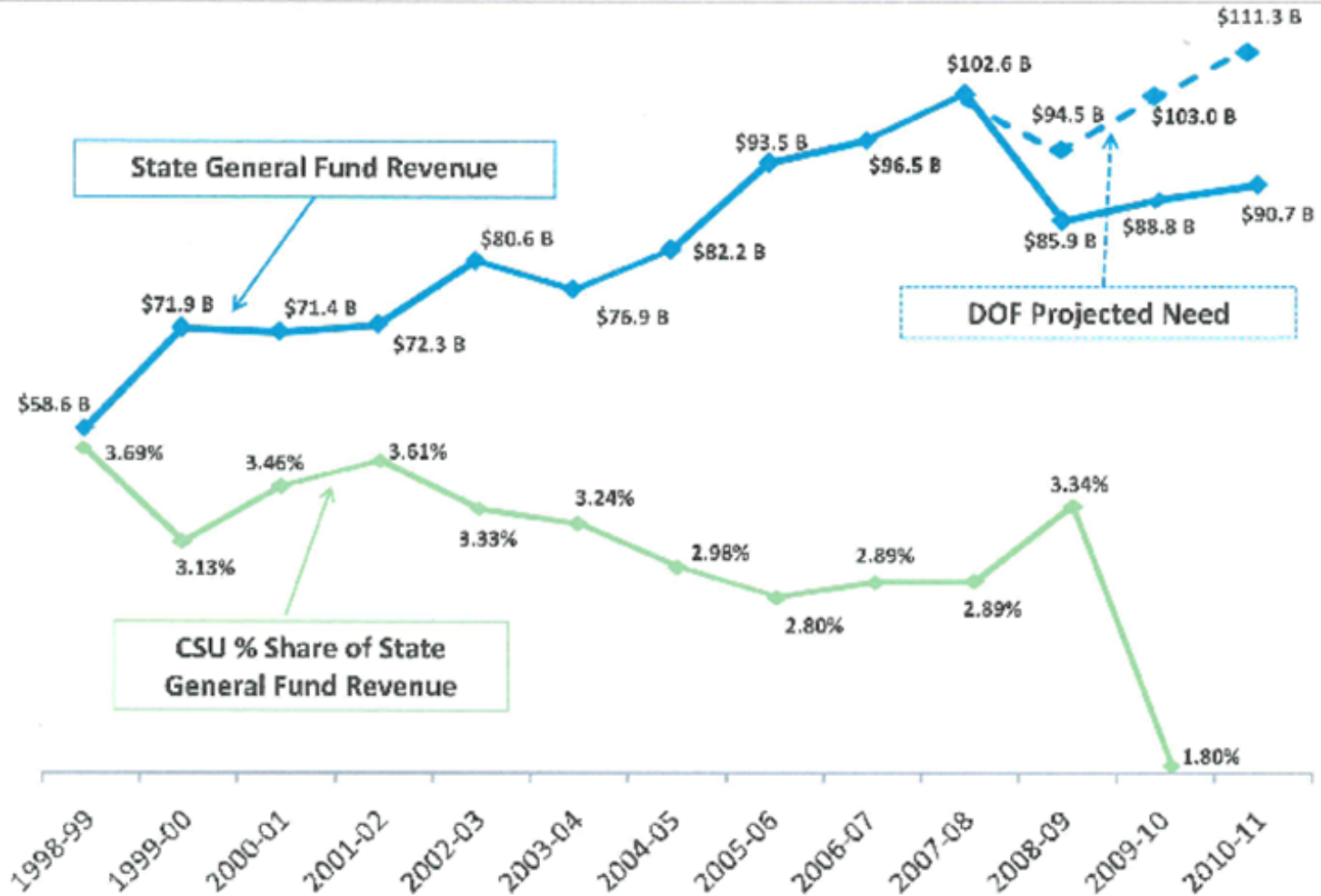
September 27-29, 2010 | Washington, DC



State Fiscal Support for Operating Expenses of Higher Education per \$1000 of Personal Income FY1961 to FY2010



State General Fund Revenue and CSU Percentage Share In Billions



CALIFORNIA

- Portion of general fund dedicated to higher education **has kept pace or grown only 12 times in the past 32 years.**
- Direct spending on 4-year universities **dropped from 11.1% in 1984 to 6.2% in 2009.**
- State aid/student at **CSU dropped 57% over last 20 years.**
- 7.8% of spending on higher education paid for with stimulus funds during 2009 and 2010
- 56.5% shortfall for 2010** - largest shortfall by portion of general-fund budget

2009-10 Budget Reduction Impact on CSU Dominguez Hills

- Sharing services with other CSU campuses
- Providing stress training for faculty and staff
- Campus-wide hiring freeze
- Campus-wide travel freeze
- Elimination of faculty release time/except chairs
- Merger of two colleges
- Increased energy saving efforts
- Stress and anxiety over uncertainty
- GE realignment
- Application and enrollment deadlines changed

Examples of Impact Across the Country

- Institutions are eliminating degree programs
- Decreasing enrollments
- Merging of Institutions
- Fewer resources for professional development and research resources
- Larger class size
- Less support services, longer lines for students
- Privates taking faculty and staff

Policy Recommendations for States

- Redirect resources to those institutions that enroll students (college eligible) that need developmental courses in math/English
- Reward institutions that increase retention and graduation of Latinos/as
- Pass Dream Act; support states who have passed legislation allowing undocumented graduates of state HS to pay in state tuition

CELEBRATING



YEARS

CALIFORNIA STATE UNIVERSITY
DOMINGUEZ HILLS

California State University's Impact on the State

- For every state \$1 invested in the CSU, the CSU returns \$5.43.
- The CSU sustains nearly 150,000 jobs in the state.
- CSU-related expenditures create \$17 B in economic activity.

CSU produces:

- About 44% of the state's engineers,
- Approximately 60% of the state's nurses,
- Nearly 80% of California teachers and others with education-related degrees.

2010-2011 Proposed California State Budget & Impact on CSU

- Restores \$305 million in cuts to the CSU system and adds \$60.6 million in funding for enrollment growth.
- The Governor also called for legislative changes to ensure that higher education receives more than our state prisons.
- We are cautiously optimistic about the Governor's proposed budget for 2010/11.
- Changes expected between now and final approval of budget.

2010-2011 CSUDH Budget Planning Assumptions

- BOT 10% fee increase is not approved.
- Proposed \$305 million restoration is cut from Governor's Budget.
- Furloughs will not continue.
- Assumes one-time funds for fall courses of \$1,420,050 have been allocated.
- Excess fee revenue for over-enrollment has not been allocated.
- Home Depot funds used for special initiatives based on the strategic plan.